

# CLT4 Sonda capacitiva per la misura del livello

825A026G

Sonda capacitiva ad asta, misura continua livello, impiego generale, adatta alla misura del livello in liquidi conduttivi e non conduttivi, protezione IP65+66, installazione nella parte superiore di serbatoi metallici.

**CODICE DI ORDINAZIONE (Esempio) CLT4 B 2 7 D 2 1 H 4 6 A**



VERSIONE					Cod.: CLT4				
<p>Solo elettrodo senza inserto preamplificatore</p> <p><b>A</b></p>	<p>Compatta elettrodo + inserto</p> <p><b>B</b></p>	<p>Certificata EX Solo con inserto TC30</p> <p><b>C</b></p>	<p>Compatta + dissipatore alettato in acciaio al carbonio</p> <p><b>D</b></p>	<p>Compatta + dissipatore alettato in AISI316</p> <p><b>F</b></p>	<p>Separata con testina DIN A in alluminio +1.5m c. coax.</p> <p><b>H</b></p>	<p>Cert. EX (TC30)+dissipatore alettato in acciaio al carbonio</p> <p><b>L</b></p>	<p>Cert. EX (TC30)+dissipatore alettato in AISI316</p> <p><b>M</b></p>	<p>Sep. con testina in AISI316 +elettrodo Ø8+1.7m coax.</p> <p><b>N</b></p>	<p>Speciale</p> <p><b>Z</b></p>
<p>INSERTO PREAMPLIFICATORE Cod.: CLT4</p> <p><b>0 0</b> Inserto = nessuno</p> <p><b>2 2</b> Inserto = TC22; 24Vdc; 4+20mA</p> <p><b>2 3</b> Inserto = TC23; 24Vac; 4+20mA</p> <p><b>2 4</b> Inserto = TC24; 115Vac; 4+20mA</p> <p><b>2 5</b> Inserto = TC25; 230Vac; 4+20mA</p> <p><b>2 6</b> Inserto = TC26; 24Vdc; 4+20mA; n.1 relè SPDT</p> <p><b>2 7</b> Inserto = TC27; 24Vac; 4+20mA; n.1 relè SPDT</p> <p><b>2 8</b> Inserto = TC28; 115Vac; 4+20mA; n.1 relè SPDT</p> <p><b>2 9</b> Inserto = TC29; 230Vac; 4+20mA; n.1 relè SPDT</p> <p><b>3 0</b> Inserto = TC30; 24Vdc; 4+20mA; 2 fili</p> <p><b>9 9</b> Speciale</p>					<p>CUSTODIA Cod.: CLT4</p> <p>PC policarbonato caricato Allum. pressofuso verniciato</p> <p><b>B</b> 142mm 122mm IP66</p> <p><b>C</b> 146mm 126mm IP66</p> <p>PBT tappi ciechi PC con coperchio trasparente</p> <p><b>D</b> 132mm 132mm IP65</p> <p><b>E</b> 142mm 122mm IP66</p> <p>Speciale <b>Z</b></p>				

# CLT4

## ATTACCO AL PROCESSO

Cod.: CLT4

### FILETTATO

8 3 G 1/2" Acciaio al carbonio

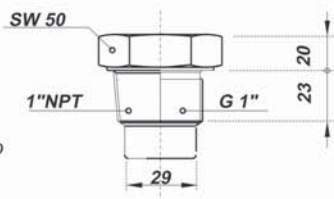
8 4 G 1/2" AISI316

0 1 G 1" Acciaio al carbonio

0 2 G 1" AISI316

0 3 1" NPT Acciaio al carbonio

0 4 1" NPT AISI316

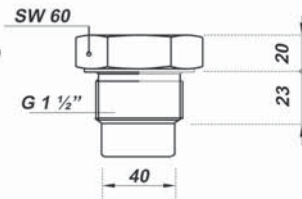


1 1 G 1 1/2" Acciaio al carbonio

1 2 G 1 1/2" AISI316

1 8 G 1 1/2" PVC

1 9 G 1 1/2" PTFE



### FLANGIATO

UNI 6091-67 PN6

DN	D	b	a	f	Fort
40	130	14	100	14	4
50	140	14	110	14	4
80	190	16	150	18	4
100	210	16	170	18	4

4 0 DN40 PVC

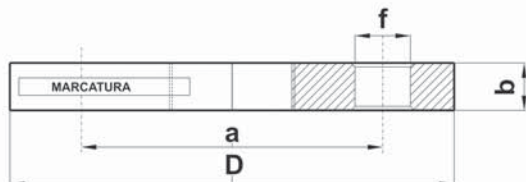
4 1 DN40 PTFE

4 2 DN40 Acciaio al carbonio

4 5 DN50 PVC

4 6 DN80 PVC

4 7 DN100 PVC



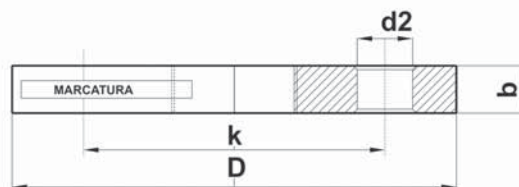
DIN 2527 Form B PN16

5 2 DN50 AISI316

5 3 DN80 AISI316

5 4 DN100 AISI316

DN	D	b	k	d2	Fort
50	165	18	125	18	4
80	200	18	160	18	8
100	220	18	180	18	8



UNI 6093-67 PN16

DN	D	b	a	f	Fort
40	150	16	110	18	4

5 0 DN40 AISI304

5 1 DN40 AISI316

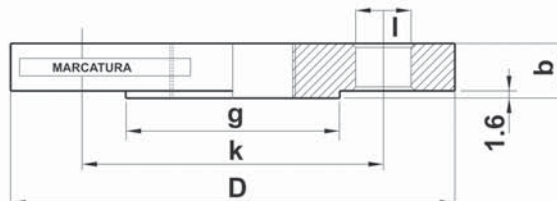
RF ANSI B16.5 150 psi

6 0 2" AISI316

6 1 3" AISI316

6 2 4" AISI316

	D	b	g	k	l	Fort
2"	152.4	19	92.1	120.6	19	4
3"	190.5	23.8	127	152.4	19	4
4"	228.6	23.8	157.2	190.5	19	8



(SP passo=1,6mm)

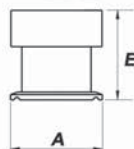
### AMBIENTE SANITARIO

CLAMP CONFORME "3A"

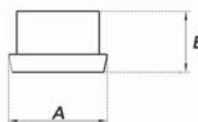
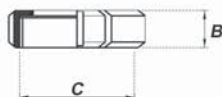
7 1 DN25 (1") AISI316L

7 2 DN38 (1 1/2") AISI316L

7 3 DN51 (2") AISI316L



DN	A	E
25 (1")	50.5	49
38 (1 1/2")	50.5	49
51 (2")	64	49



GIRELLA DIN 11851

2 0 NW25 AISI304L

2 1 NW40 AISI304L

2 2 NW50 AISI304L

NW	B	C	A	E
25	21	52-6	44	35
40	21	65-6	56	35
50	22	78-6	68	35

### SPECIALE

9 9 Speciale

ACCESSORI extra -codice

ANELLO di TENUTA

TRONCHETTO PER CLAMP



GALLETTO

# CLT4

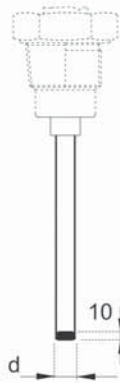
TIPO DI ELETTRODO E ISOLAMENTO

Cod.: CLT4

**B 4 0**  
**AISI316**  
 parzialmente  
 isolato in PTFE

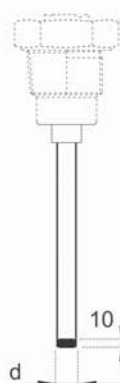


**D 4 2**  
**AISI316**  
 isolato in PVC



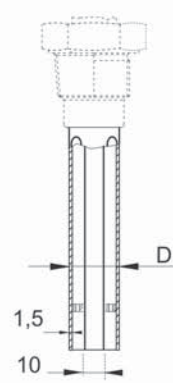
$d=14.0 \pm 0.2$  PVC

**H 4 6**  
**AISI316**  
 isolato in PTFE



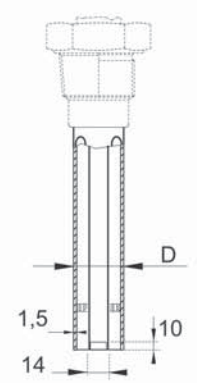
$d=12.4 \pm 0.2$  PTFE

**M 5 0**  
**AISI316 parzialmente**  
 isolato in PTFE +  
 Elettrodo di riferimento  
 concentrico in acciaio  
 al carbonio



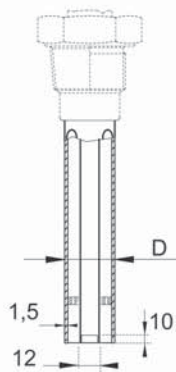
D=34mm - attacco 1/2"  
 D=22mm - attacco 1"

**N 5 1**  
**AISI316**  
 isolato in PVC +  
 Elettrodo di rif.  
 concentrico in ac.  
 al carbonio



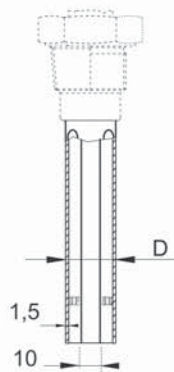
D=34mm - attacco 1/2"  
 D=22mm - attacco 1"

**P 5 2**  
**AISI316**  
 isolato in PTFE +  
 Elettrodo di rif.  
 concentrico in ac.  
 al carbonio



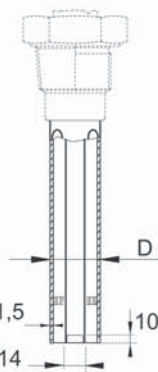
D=34mm - attacco 1/2"  
 D=22mm - attacco 1"

**Q 5 3**  
**AISI316 parzialmente**  
 isolato in PTFE +  
 Elettrodo di rif.  
 concentrico in  
 AISI316



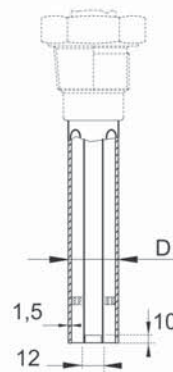
D=34mm - attacco 1/2"  
 D=22mm - attacco 1"

**R 5 4**  
**AISI316**  
 isolato in PVC +  
 Elettrodo di rif.  
 concentrico in  
 AISI316



D=34mm - attacco 1/2"  
 D=22mm - attacco 1"

**S 5 5**  
**AISI316**  
 isolato in PTFE +  
 Elettrodo di rif.  
 concentrico in  
 AISI316



D=34mm - attacco 1/2"  
 D=22mm - attacco 1"

**Z 9 9**  
 Speciale

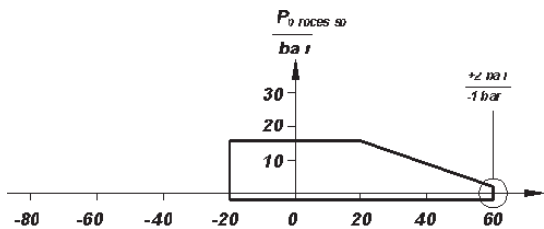
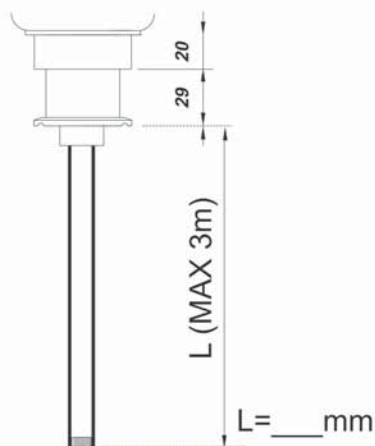
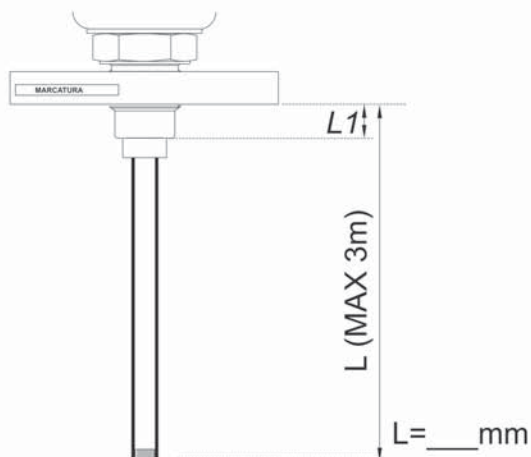
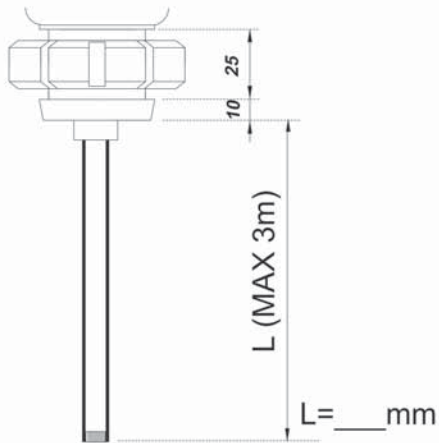
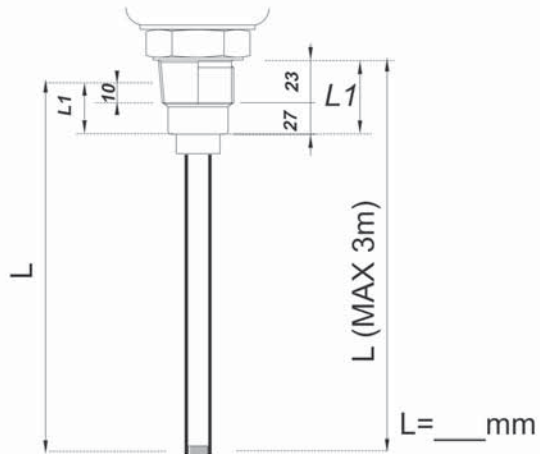
# CLT4

L1 - PARTE NON SENSIBILE

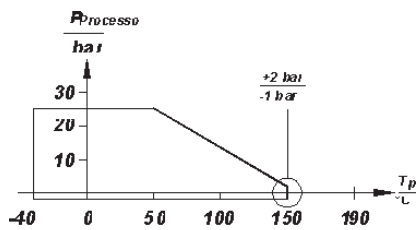
Cod.: CLT4

- A Standard L1=50mm  
 B Acciaio al carbonio L1=\_\_\_mm

- C AISI316 L1=\_\_\_mm  
 Z Speciale L1=\_\_\_mm



Isolato in PVC



Isolato in PTFE

CE